

# PRICE ESCALATION OF AREA SURROUNDING PROPERTIES ALONG METRO LINE USING GIS. A COMPARATIVE STUDY OF MUMBAI METRO AND PROPOSED PUNE METRO.

Omkar U. Mithe<sup>1</sup>, Asst. Prof. Hemant H. Salunkhe<sup>2</sup>, Dr. Ushadevi Patil<sup>3</sup>

<sup>1</sup>Research Scholar, <sup>2</sup>Assistant Professor, <sup>3</sup>Professor

Department of Civil Engineering, D.Y Patil Institute of Engineering and Technology, Ambi, Pune.  
(Savitribai Phule Pune University), (India).

## ABSTRACT

Introduction of a transit megaproject like Metro railway in any city is seen as the effective booster for real estate sector for that city. Many cities worldwide and in India also has witnessed a considerable increase in rates of properties located along metro lines, also the areas situated around metro stations within a 500 m buffer zone has both positive and negative impacts on their property values. It is not necessary that the properties will show only positive effect, sometimes it may happen that due to noise and increased presence of commuters caused by the metro railway the area in the immediate vicinity of metro railway may show negative impact i.e. rates may decrease in that area. Present project firstly focuses on finding out the effect of Mumbai metro line on surrounding area using GIS and then comparing those results for obtaining corresponding values for proposed Pune metro. Initially focus will be on Mumbai metro and outcome of the same will be evaluated for proposed Pune metro. The data required for project has been collected from various government agencies like MMRDA, PCNTDA and DRS. The paper concludes with the brief explanation of alternate method of carrying out the same study.

**Keywords:** *Transit Oriented development (TOD), Impact of proximity, Geographical Information System (GIS), Metro Rail, DP's.*

## I. INTRODUCTION

Pune has witnessed huge industrial growth since 2000. It is the only city which is not the capital of any state and yet manages a place in top 10 cities of India. Due to its geographical location, weather, IT park, Educational institutes, Automobile and various industries, culture and history it has always attracted people from various parts of India as well as Maharashtra. But, with all these advantages there comes a negative side also.

Meeting the day to day needs of these many large numbers of people, the city lacks on many grounds. One of the most pressing problems in pune city today is that of traffic. Traffic conditions in pune city have reached up to brim and are getting worsened day by day. To solve this problem the government has decided to introduce a Metro railway project in pune city to be completed in two phases. Phase 1 consists of two lines, from Pimpri to Swargate and from Vanaj to Ramwadi. Phase 2 again consists of two lines from Deccan gymkhana to Bund garden and ASI to Hinjewadi. For present project the study area finalized is from Chinchwad to Dapodi. The Metro project in any city has a certain impact on real estate sector of that city. In the same way rates of properties in the vicinity of metro line will get affected both in positive as well as negative way. For predicting the future rates a comparison of Pune metro

is done with Mumbai metro as Line 1 (Versova-Andheri-Ghatkopar) is fully functioning since 2013. The data required for project has been collected from various government agencies like Mumbai Metropolitan Regional Development Authority, Pimpri Chinchwad New Town Development Authority and Department of Registration and Stamps (government of Maharashtra website). The Geographical information system (GIS) and Global mapper software has been used for georeferencing, digitization, preparing maps and attribute table purpose. The obtained results and conclusions show that metro railway has a mixed impact on property values. Some areas have shown increase in rates and other has shown decrease. The paper concludes with the brief explanation of alternate method of carrying out the same study.

## II.LITERATURE REVIEW

In the past many studies has been carried out by various researchers worldwide to identify the possible impact of metro railway line on surrounding area properties. Some of them are as follows:-

A. There are both positive and negative impacts of rail transit system on nearby areas. In the paper the author Roderick B. Diaz et al. gives a summary of various studies carried out to examine the impact rail transit on property values. The authors give general conclusions as to how the impact is. Further, in assessment of positive impacts they found out that one bedroom apartment units within a quarter-mile of the Pleasant Hill BART (Bay Area Rapid Transit System) station in suburban Contra Costa County, east of San Francisco, rented for approximately 10% more per square foot than one bedroom units away from BART. The opposite occurred on the north side. For every 100 feet a property was closer to the East Line, property values dropped by \$965. This negative effect may be due to such factors as noise, perceptions of crime, and visual intrusion. Lastly authors concluded that overall there is positive effect and that transit systems benefit any city in two ways. Firstly it increases the accessibility to other parts of the town and secondly, it enhances the property value <sup>[1]</sup>.

B. Urban rail transit system plays an important role in one's life. Not only has it increased the value of property but also citizen's social activities. In this paper the author Xu Zhang et al. has used the panel data on housing prices and urban rail transit facilities for 35 Chinese cities for 2002 to 2013, for the determination of effect of rail transit facilities on housing prices quantitatively. To understand the relationship between rail transit facilities and housing prices the authors used correlation analysis. Authors found out that quantitatively, a 1% increase in rail transit mileage improves housing prices by 0.0233%. The results highlight the importance of other factors (e.g., per capita GDP, land price, investment in real estate and population density) in determining housing prices. Lastly authors conclude that this study is of practical significance, as it provides relative information for policy makers to use when applying regulatory powers to improve urban functions while stabilizing real estate prices. The central government should take utmost precautions to mitigate economic fluctuations <sup>[2]</sup>.

C. The selection of area while buying any property is very important. As the buyer will always see to it that property he or she buys is beneficial to him or her in every possible way. In the paper the author Eric Pels et al. gives answer to the question that what is the impact of railway station proximity on property value. There are various methods of studying the impact of metro railway on property values, but most common of them all is

hedonic regression which includes mathematical modelling. It provides statistical synthesis of empirical research focused on a common research question. It includes the differences in study settings that are expected to explain the variation in the findings of the studies. A total of 73 observations has been made using tool so that more precise results can be obtained. Authors found out that in general there is higher positive impact on commercial property values. Finally authors conclude that commuter railway stations have had a significantly higher impact on property values compared to light or heavy railway/Metro stations. Their higher service coverage adds to the attraction of the area surrounding the stations. This will affect the value of properties around commuter railway stations <sup>[3]</sup>.

D. When any rail transit system is introduced in a city, it is a general perception of people that it will have certain positive effect on property value. In this paper the author Amir Forouhar compares price trends before and after the opening of stations. The effect is estimated for treated and control properties of the metro stations using both trend analysis and a difference-in-differences model. The paper uses a Difference-in-Differences (DID) method as a statistical technique to calculate the effect of a treatment (adding or expanding a transit line) on an outcome (property value) by comparing the average change over time for a treatment group, compared to a control group. DID models attempt to remove biases in comparisons between the treatment and control group that could be the result from permanent differences between those groups, as well as biases from comparisons over time in the treatment group that could be the result of trends. The authors found that an overall negative effect of the metro stations on the sales value of residential properties located in Tehran's affluent neighborhoods. On the contrary, the effect is positive and high for properties located close to the southern stations in the poor and run-down neighborhoods of the city <sup>[4]</sup>.

E. The construction of subways and metro for any major city like Tianjin is very beneficial to its economy. The major change which can be seen is the acceleration of the property values in housing near subway stations. In this paper the author Hui Sun et al. has selected Tianjin, the largest open coastal city in Northern China as study area for their project. The authors analyze the sphere of influence of Tianjin Metro Line 3 on real estate prices. The results show that the housing located at the closest distance to the station has experienced a significant impact. The regression results for the entire region show that the coefficient of the distance to the nearest subway station is  $-0.099011$ . Namely, if the property is located 1 km from the station, its property prices increase by 9.9011%. For nonurban centers, subway line 3 stations have a very strong impact on housing prices.

The coefficient reaches  $-0.247471$ ; of which the absolute value is higher than the absolute value of the coefficient of the distance to the nearest subway station in the regression of the entire subway line 3 which is  $-0.099011$ . In the center area, the influence coefficient of the distance to the nearest subway line 3 stations is  $-0.079166$ . This means that if the housing is 1 km from each track site, the prices will increase 7.9%. Finally the authors conclude that the construction of a subway plays a significant role in promoting increases in the surrounding land prices <sup>[5]</sup>.

### III.METHODOLOGY AND DATA COLLECTION

Procedure and methodology includes following steps:-

1. First and foremost step to begin the project work is to identify the area in which the work is to be carried out. For this, identification of research problem and research objectives is necessary.
2. After finalization of study area, extensive literature survey is done. In this, the work done by various authors in past is studied in detail and the procedure carried out by them is analysed. Further their results, conclusions and findings are also carefully observed.
3. Now, based on the above literature survey all the necessary data including photographs of plots of private ownerships and government ownership, Development plans with CTS numbers of finalized study area from MMRDA (Mumbai Metropolitan Regional Development Authority), ready reckoner rates of various years for both Pune (Pimpri Chinchwad New Town Development Authority) and Mumbai and actual rates of properties (around 410 properties) from website of 'Department of registration and stamps' Government of Maharashtra website were collected.
4. After collection of all the above necessary data, it is merged with GIS and global mapper software for analyzation. The development plans with CTS numbers are georeferenced (assigning real world coordinates to each pixel of the raster) with GIS so that vector data file is created.

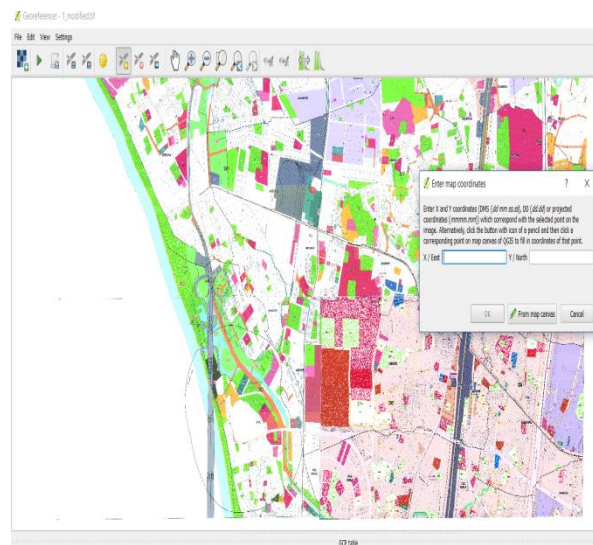


Fig. no. 1

5. After georeferencing and creation of vector file the metro line and plots surrounding it (Mumbai Metro) were digitized. Digitization can be defined as the conversion of texts and pictures into a digital form that can be processed by a computer. For achieving more accurate and precise results around 2200 plots of varying size and type were digitized using area feature command in global mapper software.

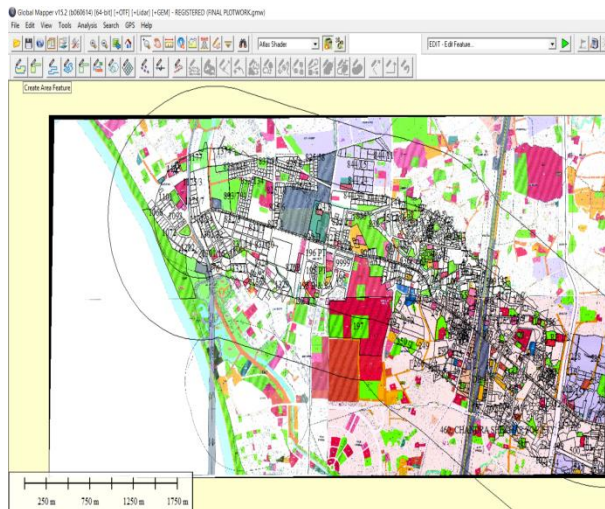


Fig. no. 2

6. While digitizing survey number of plots, 2013 ready reckoner rate and 2017 ready reckoner are added as attributes.
7. After digitization is complete, using the 'create layer wise statistics report' command the attribute table is imported as an excel sheet (.xlsx extension).
8. Then next step is to calculate %increase or %decrease in ready reckoner rates as well as actual land rates for Mumbai areas along a span of 4 years from 2013 to 2017 i.e. from the commencement of metro to 4 years.
9. Results obtained from above analysis are then tabulated and graphs were prepared.

	A	B	C	D	E	F	G	H	I	J	K	L	M	N
		2013 RATE		2014 RATE		2015 RATE		2016 RATE		2017 RATE				
1														
2														
3	ANDHERI	132142		285942		161812		188393		138060				
4		222492		133736		114617		236547		131472				
5		336733	207276.5	131783	137422.1	309707	204386.8	208736	227965.1	225968	184962		22314.5	10.76002
6		343722		116058	147010.6	272343	48.72912	345888	11.53617	229528	18.84391			
7		141457		127712		309068		186981		225361				
8		67113		100069		155187		247489		159383				
9				64655		122966		181722						
10						189394								
11														
12	ASALPHA	219452		94024		86697		161459		70352				
13		219436		100923		111033		35714		181120				
14		9662	120358.7	123130	74281.33	92676	102562	145875	103177.2	30713	86082.17		34276.5	28.47663
15		100923		57726	108.28116	107604	38.07237	107639	0.5998	82404	16.54655			
16		119546		3770		142045		76643		71759				
17		53133		66115		75317		91733		80145				
18														
19	BORIVALI	77600		103334		100000		99400		144127				
20		88751		88623		144995		128186		120000				
21		167663	92762.86	179372	139104.8	97823	159055.4	170002	141465.8	123223	144842.5		52079.64	56.14278
22		41408		146875	49.95747	119546	14.34213	134509	11.282694	139566	2.386974			
23		147456		201464		167790		102744		174125				
24		39090		114961		206227		175753		112613				
25		87372				277007		174868		181118				
26								146264		163968				
27														
28	CHAKALA	72521		134509		71303		238161		169474				
29		139871		116451		153315		204759		169589				
30		121463	118359	219587	125060.7	146295	152601.3	145761	219272	195362	170060.6		51701.63	43.68204
31		110406		26313	8.662192	155666	22.02376	235069	43.68948	160288	22.94397			
32		131279		150357		313091		388074		206376				

Fig. no. 3

10. The results obtained for Mumbai metro are then compared with proposed pune metro, the areas along the metro line in which there is %increase or %decrease in ready reckoner rates as well as actual land rates are identified and year 2021 rates are predicted, graphs for the same are prepared and Suitable conclusions were drawn.

#### IV.RESULTS

After collecting all the necessary data and doing all the procedure five graphs were prepared.

1. First graph shows the variation in average actual property rates (Index II rates) of 10 areas of Mumbai namely Andheri, Asalpha, Borivali, Chakala, Ghatkopar, Goregaon, Juhu, Kurla, Marol and Versova over the years 2013, 2014, 2015, 2016 and 2017. It represents the general trend of five years i.e. from the commencement of metro to 4 years.

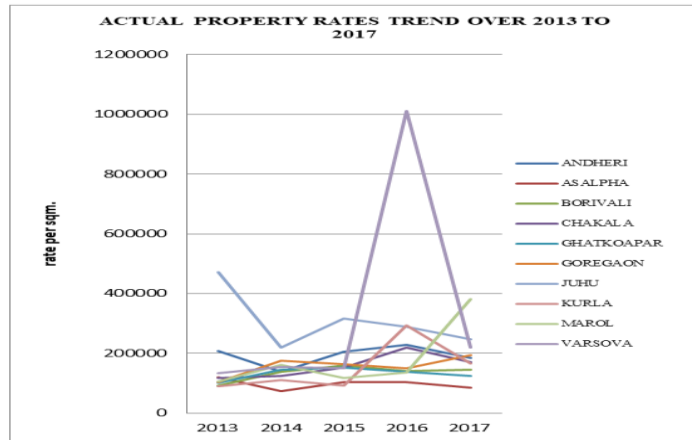


Fig. no. 4

2. Second graph shows the difference in average actual property rates (Index II rates) of 10 areas of Mumbai namely Andheri, Asalpha, Borivali, Chakala, Ghatkopar, Goregaon, Juhu, Kurla, Marol and Versova over the years 2017 and 2013. It can be seen that in some areas property rates have decreased and in some areas property rates have increased. No, particular pattern can be seen in areas regarding the increase or decrease in rates. Although Andheri is a metro station, it is evident from the graph that its rate has been decreased.

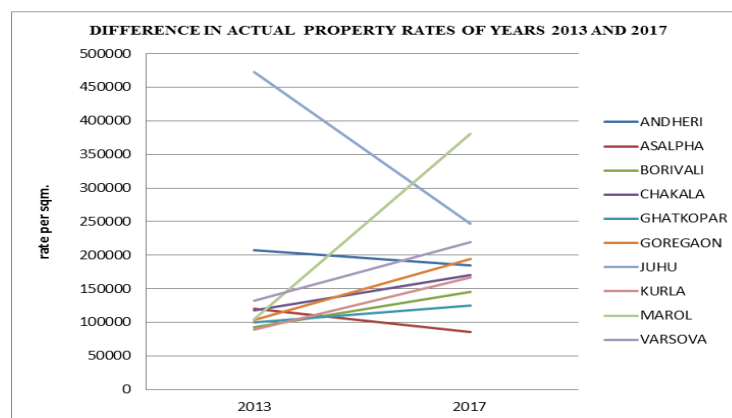


Fig. no. 5

3. Third graph shows the projected average actual property rates (Index II rates) of year 2021 of 5 areas of PCMC namely Bhosari, Chinchwad, Dapodi, Pimple Gurav and Pimple Saudagar which are compared with Chakala, Andheri, Marol, Ghatkopar and Kurla of Mumbai respectively on the basis of various parameters such as geographical position with respect to

metro line, industrial hub, amenities, institutions, population density, district headquarters, slum area, government offices etc.

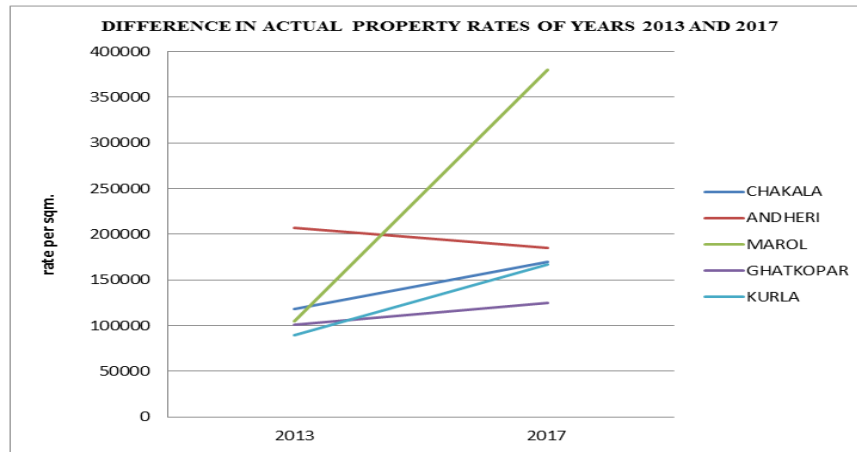


Fig no. 6



Fig. no. 7

- Fourth graph shows average increase in ready reckoner rates (Mumbai) from year 2013 to 2017 of 4 categories namely residential / industrial, office, land and shops. Further these rates were compared to Pimpri Chinchwad ready reckoner rates to get the projected rates of year 2021.

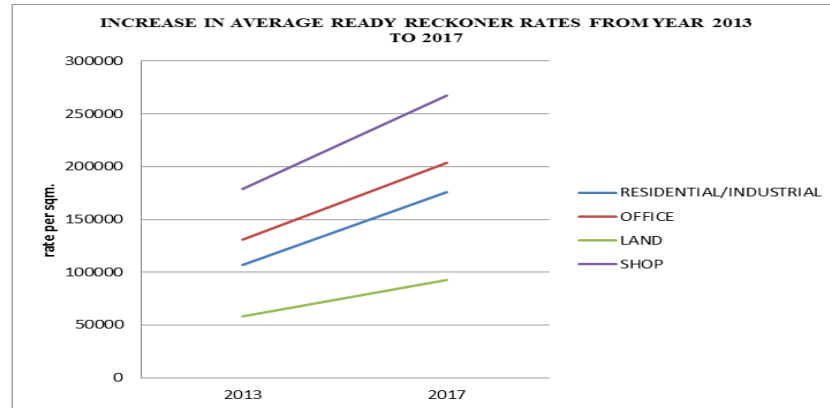


Fig. no. 8

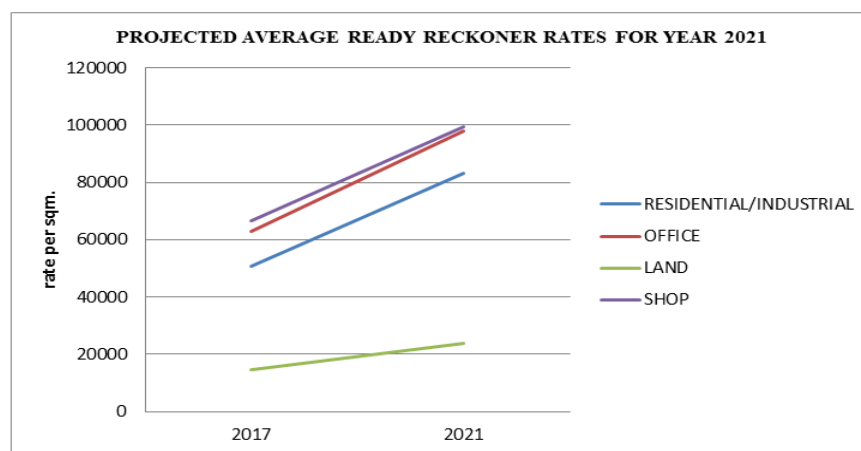


Fig. no. 9

## V.CONCLUSION

As it is evident from the literature review and results founded above that metro project for any city has both positive and negative effects i.e. some areas around metro line shows increase in land value rates and some areas shows decrease in land value rates. In Mumbai city also a mixed effect of metro project can be seen. Andheri, Asalpha and Juhu have seen decrease in rates by 10.76%, 28.47% and 47.75% respectively over the years 2013 to 2017. This is due to the fact that with the ease of transportation people tend to move to outer peripheral areas of Mumbai city and buy properties there. Also due to increase in traffic, pollution, noise and daily commuters travelling by metro, people intend not to buy property near to metro station but away from it. In contrast to this Borivali, Chakala, Ghatkopar, Goregaon, Kurla, Marol and Versova have seen increase in rates (as an obvious effect) by 56.14%, 43.68%, 24.50%, 87.34%, 86.22%, 261.78% and 65.39% respectively over the years 2013 to 2017. This is due to the reason that transit projects usually have positive effect on property values due to increased accessibility and beautification of area, negative effect being the rare case. With the help of Mumbai metro case study, predictions for the Pune metro has been made (for the year 2021) which will start functioning by July 2019(estd).



Five areas of PCMC (Pimpri Chinchwad Municipal Corporation) has been selected which are located around proposed Pune metro line (phase 1) namely Bhosari, Chinchwad, Dapodi, Pimple Gurav and Pimple Saudagar. Based on different parameters these areas were compared with Mumbai areas. Such as Bhosari is compared to Chakala and is expected to have an increase of 43.68% ( $\pm 10\%$ ). Likewise Chinchwad is compared to Andheri and is expected to have a decrease of 10.76% ( $\pm 10\%$ ). In the same way Dapodi is compared with Marol, expected increase of 261.78% ( $\pm 10\%$ ). Pimple Gurav compared to Ghatkopar, expected increase of 24.50% ( $\pm 10\%$ ). At last Pimple Saudagar is compared to Kurla, expected increase of 86.23% ( $\pm 10\%$ ). Second part of project was to estimate year 2021 ready reckoner rates in Pimpri Chinchwad based on increase in ready reckoner rates over the years 2013 to 2017 in Mumbai. Study shows that average increase in 'residential / industrial' rate is 64.69%. Likewise average increase in 'offices' rate is 55.59%. Average increase in 'land' rate is 59.87% and average increase in 'shop' rate is 49.65%. It can be said that proposed Pune metro will have a mixed effect on real estate sector of Pimpri Chinchwad i.e. some areas will show increase in rates and some areas will show decrease in rates.

## VI.FUTURE SCOPE

This study was carried out to find the effect of Pune metro on property values. As the purpose for which the project of Pune metro was undertaken by authorities was to ease the traffic congestion, it will surely affect the Pune and Pimpri Chinchwad real estate market in the upcoming years. The method used to quantify the effect of metro in this study is to compare the results of Mumbai metro, which is running successfully for about 5 years with proposed Pune metro. In near future when Pune metro will start functioning properly and regularly, the same study can be carried out using Hedonic Regression analysis. This process includes drafting of mathematical equation which consists of one dependent variable depended on four or five independent variables. On performing regression analysis we can get desired results. The main condition for applying hedonic regression analysis is that transit system needs to be in working condition at the time of applying this model. In cities worldwide many researchers have applied same model for estimating the effect of transit system on property values. So, in case of Pune city also one can apply the same model and get desired results.

## REFERENCES AND BIBLIOGRAPHY

- [1] Roderick B. Diaz, Booz Allen and Hamilton, *Impacts of Rail Transit on Property Values*.
- [2] Xu Zhang, Xiaoxing Liu, Jianqin Hang, Dengbao Yao and Guangping Shi, (2016) *Do Urban Rail Transit Facilities Affect Housing Prices? Evidence from China*. [www.mdpi.com/journal/sustainability](http://www.mdpi.com/journal/sustainability).
- [3] Ghebreegziabiher Debrezion, Eric Pels and Piet Rietveld, (2004) *The Impact of Railway Stations on Residential and Commercial Property value*. Tinbergen institute.
- [4] Amir Forouhar, (2016) *Estimating the impact of metro rail stations on residential property values: evidence from Tehran*. Public Transp DOI 10.1007/s12469-016-0144-9.

- [5] Hui Sun, Yuning Wang, and Qingbo Li, (2016) *the Impact of Subway Lines on Residential Property Values in Tianjin: An Empirical Study Based on Hedonic Pricing Model*. Hindawi Publishing Corporation Discrete Dynamics in Nature and Society Volume 2016, Article ID 1478413.
- [6] Xin Janet Ge, Heather Macdonald and Sumita Ghosh, (2012) *Assessing the impact of rail investment on housing prices in north-west Sydney*. 18th Annual Pacific-Rim Real Estate Society Conference Adelaide, Australia.
- [7] Sisi Yan, Eric Delmelle and Michael Duncan, (2012) *the impact of a new light rail system on single-family property values in Charlotte, North Carolina*. The journal of land use and transport. Volume 5, No. 2.
- [8] Vessali and Kaveh V, (1996) *Land Use Impacts of Rapid Transit: A Review of the Empirical Literature*.
- [9] Deborah Salon, Jingyan (Dora) Wu and Sharon Shewmake. (2014) *Impact of Bus Rapid Transit and Metro Rail on Property Values in Guangzhou, China*.
- [10] Rajeeshwaran Moorthy and Neo Jeronn. (2014) *Public Transportation Effect on the Rising of Property Prices in Malaysia: A Correlation Study of MRT Project*. Copyright © 2014 Society of Interdisciplinary Business Research (www.sibresearch.org). ISSN: 2304-1013 (Online); 2304-1269 (CDROM).
- [11] Prof. H. M. Shivanand Swamy and Sagar Setia. *Metro Rail Transit System Impacts On Land-use And Land Values in Bangalore, India*.
- [12] (2013) *Delhi Metro and its influence on real estate prices*.Makaan.com.
- [13] Parsons Brinckerhoff, (2001) *The Effect Of Rail Transit On Property Values A Summary Of Studies*. Research carried out for Project 21439S, Task 7 NEORail II, Cleveland, Ohio.
- [14] A. Shankar, (2015) *Metro Rail –An Unmatched Real Estate Catalyst*. National director & Head, Urban Solutions (Strategic Consulting), JLL India.
- [15] *Urban Transport, Unlocking the Realty Potential* by knight frank.
- [16] Col. (Veteran) Prithvi Nath (VSM), (2015) *India awakes*.
- [17] (2013) *The New Real Estate Mantra, Location Near Public Transportation*, Commissioned By American Public Transportation Association In Partnership With National Association Of Realtors Prepared By The Centre For Neighborhood Technology.
- [18] Stiabhna Baker-Holland and Jodie Walker, (2015) *Melbourne metro rail project*. Volume 34.
- [19] *Transit Modes and Its Effects on Real Estate*, by common floor report.
- [20] *Pune metro* Wikipedia.
- [21] Daniel Baldwin Hess and Tangerine Maria Almeida, (2007) *Impact of Proximity to Light Rail Rapid Transit on Station-area Property Values in Buffalo, New York*. Urban Studies, Vol. 44, Nos. 5/6, 1041–1068, May 2007.
- [22] Hiroaki Suzuki, Jin Murakami, Yu-Hung Hong, and Beth Tamayose, (2015) *financing transit oriented development with land use*.
- [23] Berenice Bon, EHESS-CEIAS Paris, Project FP7 Chance2Sustain, France, (2014) *a new megaproject model and a new funding model. Travelling concepts and local adaptations around the Delhi metro*, Habitat International 45 (2015) 223-230.

- [24] Francesca Medda, UCL QASER Lab., University College London, Gower Street, London, United Kingdom, (2012) *land value capture finance for transport accessibility: a review*. Journal of Transport Geography 25 (2012) 154–161.
- [25] Jay Mittal, Iowa State University, Community & Regional Planning Department, College of Design, Ames, IA 50011, USA, (2014) *self-financing land and urban development via land readjustment and value capture*. Habitat International 44 (2014) 314-323.
- [26] Yoshitsugu hayashi, Department of Civil Engineering, Nagoya University, Nagoya 464-01, Japan, (1989) *issues in financing urban rail transit projects and value captures*. Av.d. 23.4N.O. 1. P p.35-44.
- [27] Juan Pablo Bocarejo, Ingrid Portilla and Maria Angélica Pérez, (2012) *impact of Transmilenio on density, land use, and land value in Bogotá*. Research in Transportation Economics 40 (2013) 78-86.
- [28] Guicai Li, Xiaofan Luan, Jiawen Yang and Xiongbin Lin, (2014) *value capture beyond municipalities: transit-oriented development and inter-city passenger rail investment in china's Pearl River delta*. Journal of Transport Geography 33 (2013) 268–277.
- [29] Keith Bartholomew and Reid Ewing, (2011) *Hedonic Price Effects of Pedestrian- and Transit-Oriented Development*. Journal of Planning Literature 26(1).
- [30] Antonio Páez, Fei Long and Steven Farber, (2008) *Moving Window Approaches for Hedonic Price Estimation: An Empirical Comparison of Modelling Techniques*. Urban studies 45(8) 1565–1581.
- [31] *Detailed Project Report for Pune Metro Rail project*.
- [32] *Kochi Metro impact on Real estate*.
- [33] *Kochi Real estate market to benefit from Metro Project*.